


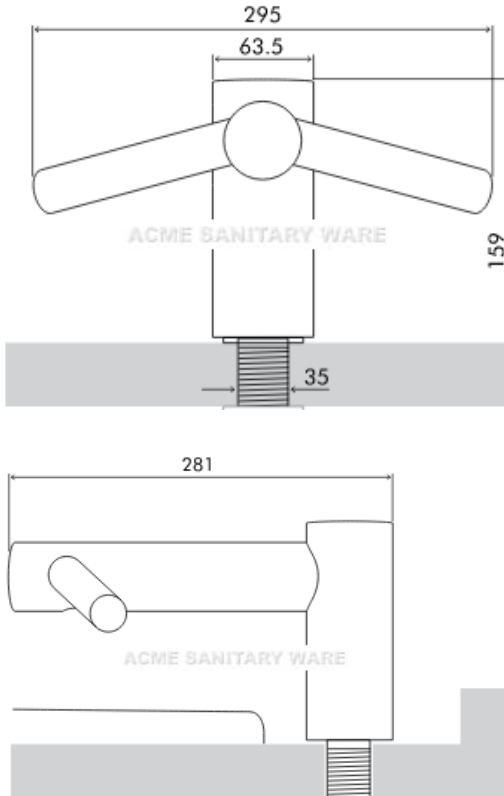


Acme Sanitary Ware Co. Ltd.

1/F, Acme Building, 22-28 Nanking Street, Kowloon, Hong Kong
Tel: 2388 7171 Fax: 2710 8012
Email: acme@acmesanitary.com.hk
Website: www.acmesanitary.com.hk

PROJECT		REF		REV	ITEM CODE	
LOCATION		DATE			PAGE	

SANITARY WARE SPECIFICATION SHEET

Item Descriptions	Dyson (UK) "Airblade tap" 2 in1 stainless steel Airblade Tap hand dryer	Illustration/ Drawing
Dimensions	W295 x L281 x H159 mm	
Model	AB09	
Finish	Stainless Steel	
Manufacturer	DYSON	
Supplier	Acme Sanitary Ware Co. Ltd Mr. Eric Wong/ Mr. Don Yuen	
Contact Tel/Fax	(852) 2388-7171 / (852) 2710-8012	
E-mail	acme@acmesanitary.com.hk	
Website	www.acmesanitary.com.hk	
<div><div>Locating the soap dispenser</div><p>The infrared sensing zone for air activation extends along each tap branch. Therefore, it is the user's hand route to the soap dispenser that is most important to prevent nuisance activation.</p><p>The soap dispenser should be located at least 60mm outside the width of the tap. This is so the user can reach around the side of the branch.</p><p>The soap dispenser should be located at least 60mm above the branches so that the sensors are not activated.</p><p>It is also important to note that the user may reach diagonally across for the soap and this path must not go through the sensing zone.</p></div> <div><div>Mounting the motor bucket (AB09/AB10)</div><p>The motor bucket cannot be mounted upside down.</p><p>The motor bucket cannot be installed above the sink.</p><p>100mm minimum clearance from bottom of motor bucket to floor/wall.</p><p>Only the following is advised.</p></div>		

Note:

* All information of the above is for the reference only. No prior notice is made if any changes.



Acme Sanitary Ware Co. Ltd.

1/F, Acme Building, 22-28 Nanking Street, Kowloon, Hong Kong

Tel: 2388 7171 Fax: 2710 8012

Email: acme@acmesanitary.com.hk

Since 1949

Website: www.acmesanitary.com.hk

PROJECT		REF		REV	ITEM CODE	
LOCATION		DATE			PAGE	

AB 09 AB 10 AB 11

Electrical

Input voltage/Frequency: 220-253V 50 Hz

Rated power: 1600 W

Motor type: Dyson digital motor – brushless DC Motor

Motor switching rate: 6,000 per second

Motor speed: 90,000 rpm

Operating temperature range: 0° – 40°C

Heater type: None

Standby power consumption: Less than 0.5 W

Construction

Tap construction: Stainless steel (brushed)

Under counter motor assembly construction: Moulded ABS (main unit)

Exterior screw type: Torx T15

Water ingress protection to IP25

Filter

HEPA filter (glass fibre and fleece prelayer)

Bacteria removal 99.9%

Operation

Touch-free infra-red activation

Hand dry time measurement: 12 seconds (Measurement based on National Sanitation Foundation Protocol P.235)

Operation lock-out period: 20 seconds

Airspeed at apertures: 420 mph

Operating airflow: Up to 20 l/s

Water operation

Water flow rate: 4 l/min

Tap Aerator: Aerated water outlet

Tap power supply: Mains supply

Water temperature control: Thermostatic mixer recommended (not supplied)

Water pressure required: 1-8 Bar

Logistics

Serial number prefix: AB09 ED6; AB10 ED7; AB11 ED8

Single unit order code: AB09 25989-01; AB10 25990-01; AB11 25991-01

Net weight: AB09 4.2kg; AB10 4.6kg; AB11 TBC

Packaged weight: AB09 5.8kg; AB10 6.2kg; AB11 TBC

Packaged dimensions: AB09 H203 × W284 × D286 mm

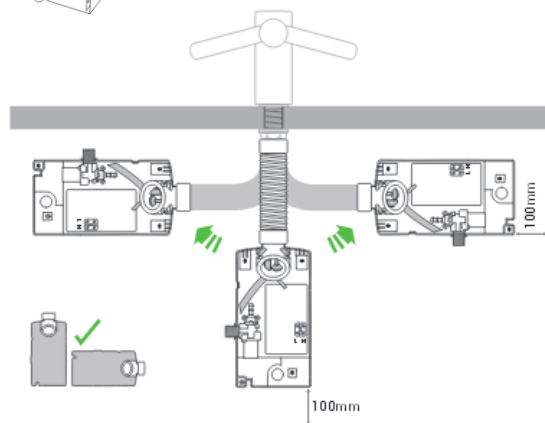
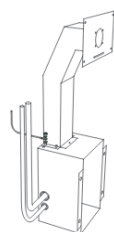
AB10 H276 × W427 × D280 mm; AB11 H302 × W610 × D275 mm

Unit barcode: AB09 5025 1550 1583 4;

AB10 5025 1550 1584 1; AB11 5025 1550 1585 8

Mounting the motor bucket (AB11) Metal enclosure assembly

This Dyson product is designed so the motor unit is located behind the stud wall. The vertical wall studs must be constructed so as to allow the metal enclosure to be fitted between them. One of the horizontal wall studs must be fitted a) so it holds the main weight of the metal duct and the unit, and b) so it is in the correct position for the tap stem.

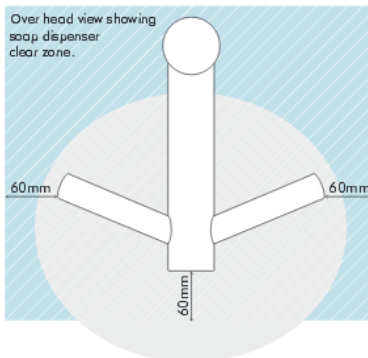


Eases washroom congestion

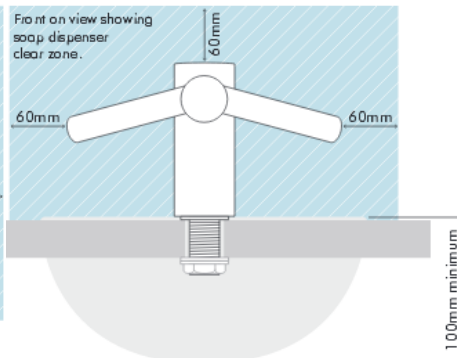
The Dyson Airblade Tap hand dryer takes 12 seconds to dry hands. So users spend less time in the washroom, and busy periods are easier to manage.



Over head view showing soap dispenser clear zone.



Front on view showing soap dispenser clear zone.



AB09 Short

AB10 Long

AB11 Wall



Note:

* All information of the above is for the reference only. No prior notice is made if any changes.



Waterworks Department

香港灣仔告士打路入境事務大樓 48 樓

Waterworks Department, Tower, 7 Gloucester Road, Wan Chai, Hong Kong

本署檔號 : (12) in WSD 3321/19 T/J(809/2019)
Our ref.
來函檔號 :
Your ref.

電話 :
Tel.
傳真 : 2824 0578
Fax.

13 January 2020

Approval of "DYSON" Sensor Taps (General Acceptance No. C20200029)

Your letter dated 29 July 2019 and subsequent submissions received by this department up to 27 December 2019 refer.

Having considered the test reports ref. HT19070287 and HT18040231 issued on 24 December 2019 and 5 December 2019 respectively by The Hong Kong Standards and Testing Centre Limited, this Authority accepts that the fittings described below comply with, and their use when correctly installed does not contravene, the Waterworks Ordinance and Regulations.

Name of Manufacturer: Dyson Technology Limited
Country of Origin: Malaysia
Brand: Dyson
Details of Fittings: 20mm Sensor tap with 1 no. of flexible hose
Model: AB09, AB10, AB11
Body Markings: **dyson**



Expiry Date: 30 August 2023

This Authority hereby permits the use of the above fittings in fresh water plumbing systems subject to full adherence to Waterworks installation requirements. In particular, you are required to draw your customers' attention to the following requirement-

"A stop cock or gate valve must be installed at the upstream of the fittings for manual isolation of water supply." AND

"The main voltage operated sensor valve should comply with the electricity safety regulation for applications in bathroom, toilet etc."

A condition of this acceptance is that the fittings to be installed shall be replicas of the samples as certified by the testing agent mentioned above and without modifications. This acceptance may be withdrawn at any time if the standard of the fittings installed fails to meet that of the approved samples or if the fittings are found to be unsuitable for use in fresh water plumbing systems.

This acceptance is only applicable to the main body of the fittings, unless otherwise specified.

For the use of the fittings in any project, the General Acceptance Number of this letter must be quoted as a means of identification of acceptance of the fittings by this Authority.

Should you have any enquiries, please contact our Engineer Mr. Terry KUNG at tel. no. 3583 4086.

Yours faithfully,



(CHAN Chung-kun)

for Director of Water Supplies

Encl.

c.c. WSD 3321/1/82] - without catalogue
ME/MC] - with soft copy only